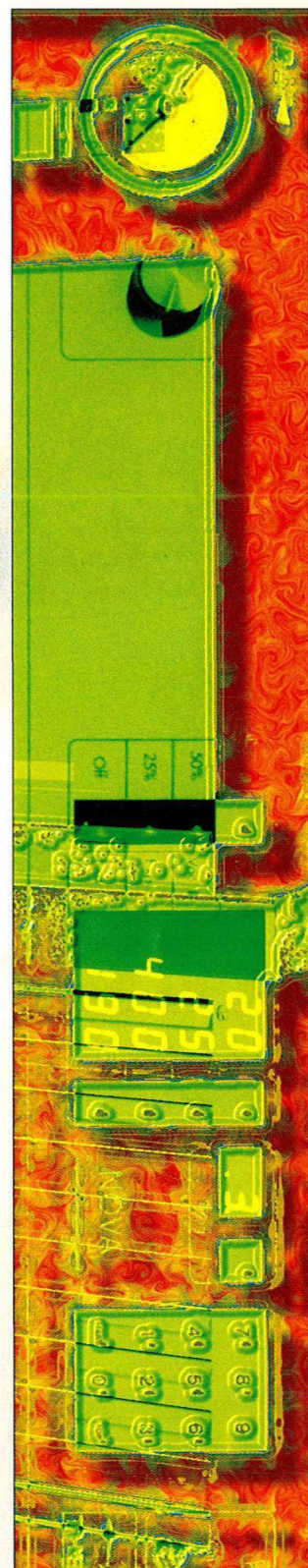


# COPYFACE

*Table top contact printer*

*Proven techniques,  
and highest quality,  
for all applications.*



**THEIMER** GmbH





# COPYFACE

*For exposure of film and offset plates*



COPYFACE with drawer storage cabinet

- UV safe and automatic closing doors gives best security to the users.
- Exposure time controlled by Photocell which is specially prepared for the spectral sensitivity of offset plates or film.
- THEIMOSPEED-Vakuum system gives short vacuum times and avoids undercutting.
- Automatic diffusion foil for eliminating cutting edges.
- Economical, versatile exposure frame designed for highest quality.
- NOVA; 3 level lamp system or RAPID instant start system for best results.

Top Quality THEIMER light sources, modern Electronics and reliable working mechanics make the COPYMAT a real partner for many years of use.

NOVA lamp system with 3 power levels and a standby power of only 25 % or the THEIMER instant start system RAPID. Both lamp systems are available in the multifunctional COPYMAT.

The installed THEIMER KR-Computer with 72 programmes, using software specially designed for the graphic arts industry,

is controlling the whole exposure process. This computer eliminates power fluctuations and changes in light intensity due to

the ageing of bulbs by using a special designed photocell. The KR-Computer is easy to use and the exposure cycle is started by closing the vacuum frame. All necessary information about the selected program is permanently shown at the optimised LED display.

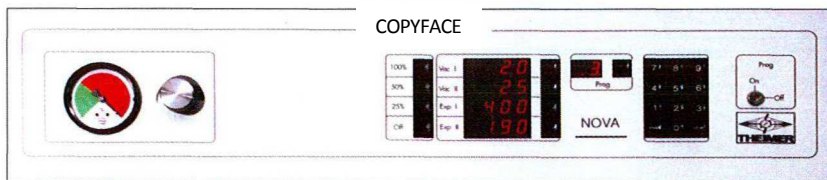
Intensity control, running time totalizer and information about the actually installed lamp are standard features of the KR-Computer.

Professional vacuum systems like THEIMOSPEED, or THEIMOPLAN and automatic diffusion foil are available for Copymat and ensure best results.

Useful accessories like a floor stand, a drawer storage cabinet (see picture) or a Kokomo filter for exposing Proof materials make the COPYMAT usable in nearly all areas of the printing arts industry.

models available:

Light source	format: 64 x 75 cm	format: 70 x 90 cm	diffusion foil	Theimospeed
NOVA 1 kW	•		•	•
NOVA 2,5 kW	•	•	•	•
Rapid 1 kW	•		•	•
Rapid 3 kW	•	•	•	•



COPYFACE front panel

**THEIMER** GmbH



**Theimer GmbH**

Rohler Straße 10, 63633 Birstein  
Telefon: +49 (0) 6054 9112-0  
Telefax: +49 (0) 6054 911222  
E-Mail: [info@Theimer.de](mailto:info@Theimer.de)  
Homepage: [www.Theimer.de](http://www.Theimer.de)  
VAT-No.: DE 266738562

**Bankkonto:**

Kreissparkasse Gelnhausen  
(BLZ 507 500 94) Nr. 700 6430  
IBAN: DE54507500940007006430  
BIC: HELADEF1GEL

**Geschäftsführer:**

T. Theimer  
H. Marburger – Theimer  
HRB 92925  
AG Hanau